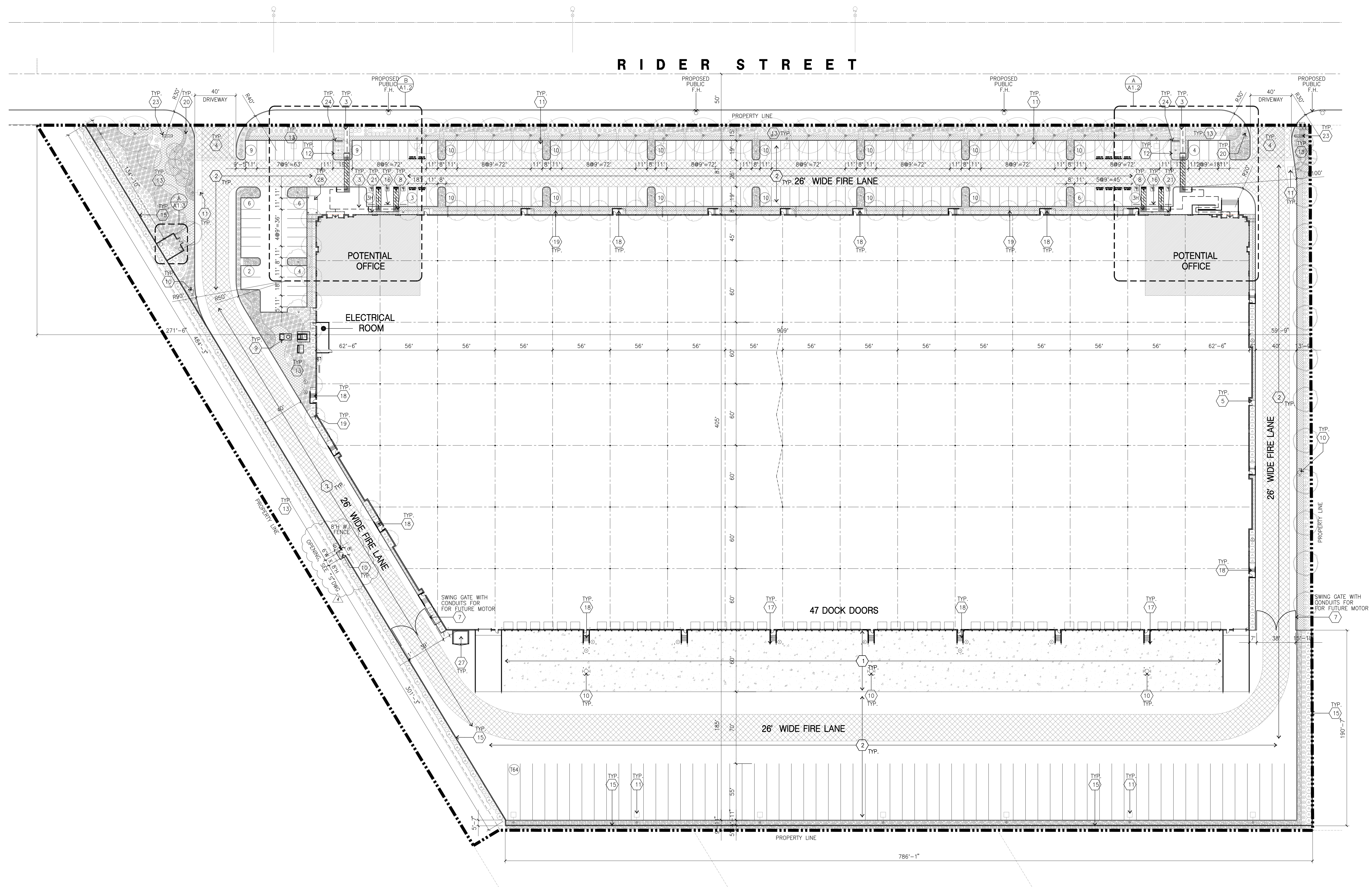


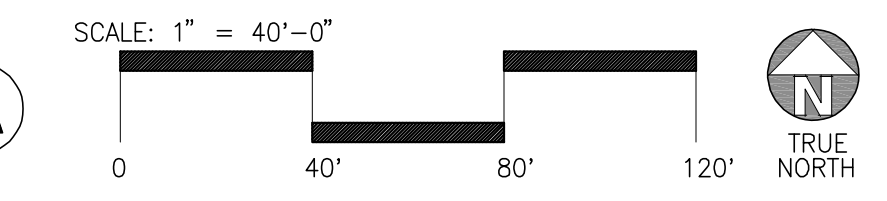
|                 |                  |
|-----------------|------------------|
| CIVIL           | WEBB ASSOCIATES  |
| STRUCTURAL      | HSA              |
| MECHANICAL      | RPM              |
| PLUMBING        | RPM              |
| ELECTRICAL      | EIE              |
| LANDSCAPE       | HUNTER LANDSCAPE |
| FIRE PROTECTION | GUPP             |
| SOILS ENGINEER  | -                |

Revision:

|               |          |
|---------------|----------|
| PLAN CHECK #1 | 08/09/17 |
| ASI NO. 2     | 11/14/17 |
| ASI NO. 4     | 3/14/18  |



**OVERALL SITE PLAN**  
scale: 1" = 40'-0"



**SITE PLAN KEYNOTES**

- 1 HEAVY BROOM FINISH CONCRETE PAVEMENT.
- 2 PAVEMENT FINISH PER CIVIL.
- 3 CONCRETE WALKWAY, MEDIUM BROOM FINISH
- 4 DRIVEWAY APRONS TO BE CONSTRUCTED PER CIVIL DWGS.
- 5 5'-6" X 5'-6" X 4" THICK CONCRETE EXTERIOR LANDING PAD TYP. AT ALL EXTERIOR MAN DOORS TO LANDSCAPED AREAS. FINISH TO BE MEDIUM BROOM FINISH PROVIDE WALK TO PUBLIC WAY OR DRIVE WAY AS REQ. BY CITY INSPECTOR.
- 6 NOT USED.
- 7 PROVIDE 8" HIGH BLACK PAINTED METAL GATES W/ KNOX-BOX PER FIRE DEPARTMENT STANDARDS PER DRIVEWAY. CONTRACTOR TO DESIGN & DETAIL GATES. DRAWINGS AND CALCULATIONS PRIOR TO FABRICATION. PROVIDE CONDUIT FOR FUTURE.
- 8 TRUNCATED DOME. SEE DETAIL 17/AD.1
- 9 APPROXIMATE LOCATION OF TRANSFORMER. PER ELECTRICAL AND CONTRACTOR TO VERIFY WITH S.C.E..
- 10 FIRE HYDRANT PER FIRE PROTECTION DRAWINGS.
- 11 LIGHT POLE BASE PER STRUCTURAL. FIXTURE PER ELECTRICAL 11/AD.2
- 12 SMOKING AREA. SEE DETAIL 5, 6 AND 7/AD.5
- 13 LANDSCAPE. ALL LANDSCAPE AREAS INDICATED BY SHADING
- 14 FUTURE MOTOR LOCATION PROVIDE ELEC. STUBS UP - SEE ELEC.

- 15 14" H SPLIT FACE CMU WALL WITH "CAP AND BERM" ANGELUS BLOCK CO. SPLIT FACE MEDIUM WEIGHT - NATURAL GRAY
- 16 PRE-CAST CONC. WHEEL STOP. SEE DETAIL 3/AD.1
- 17 CONC. FILLED GUARD POST 76 DIA. U.N.O. 42" H. SEE DETAIL 9/AD.1
- 18 EXTERIOR CONCRETE STAIR. SEE DETAIL 1, 6/AD.2
- 19 ROOF DRAIN THRU WALL & CURB. SEE DETAIL 18, 19/AD.3
- 20 ACCESSIBLE ENTRY SIGN. 15/AD.1
- 21 ACCESSIBLE PARKING STALL SIGN PER 14/AD.1
- 22 PRE-CAST CONCRETE WHEEL STOP. SEE DETAIL 3/AD.1
- 23 SEPARATE PERMIT MONUMENT SIGN. SEE LANDSCAPE PLANS.
- 24 BIKE RACK. 8/AD.2. SEE LANDSCAPE PLANS.
- 25 NOT USED.
- 26 NOT USED.
- 27 TRASH ENCLOSURE AD.7
- 28 EMPLOYMENT BREAK AREA. SEE DETAIL 6 AND 7/AD.7

**SITE PLAN GENERAL NOTES**

1. SOCAL GEO 16G151-1 DATED MAY 9, 2016
2. IF SOILS ARE EXPANSIVE IN NATURE, USE STEEL REINFORCING FOR ALL SITE CONCRETE
3. ALL DIMENSIONS ARE TO THE FACE OF CONCRETE WALL, FACE OF CONCRETE CURB OR GRID LINE U.N.O.
4. SEE "C" PLANS FOR ALL CONCRETE CURBS, GUTTERS AND SWALES.
5. THE ENTIRE PROJECT SHALL BE PERMANENTLY MAINTAINED WITH AN AUTOMATIC IRRIGATION SYSTEM.
6. SEE "C" DRAWINGS FOR POINT OF CONNECTIONS TO OFF-SITE UTILITIES. CONTRACTOR SHALL VERIFY ACTUAL UTILITY LOCATIONS.
7. PROVIDE POSITIVE DRAINAGE AWAY FROM BLDG. SEE "C" DRAWINGS.
8. CONTRACTOR TO REFER TO "C" DRAWINGS FOR ALL HORIZONTAL CONTROL DIMENSIONS. SITE PLANS ARE FOR GUIDANCE AND STARTING LAYOUT POINTS.
9. SEE "C" DRAWINGS FOR FINISH GRADE ELEVATIONS.
10. CONCRETE SIDEWALKS TO BE A MINIMUM OF 4" THICK W/ TOOLED JOINTS AT 6' O.C. EXPANSION/CONSTRUCTION JOINTS SHALL BE A MAXIMUM 12' EA. WAY. EXPANSION JOINTS TO HAVE COMPRESSIVE EXPANSION FILLER MATERIAL OF 1/4". FINISH TO BE A MEDIUM BROOM FINISH U.N.O.
11. ALL PROPERTY LINES, EASEMENTS & BUILDINGS, BOTH EXISTING AND PROPOSED, ARE SHOWN THIS SITE PLAN

12. PAINT CURBS AND PROVIDE SIGNS TO INFORM OF FIRE LANES AS REQUIRED BY FIRE DEPARTMENT.
13. CONSTRUCTION DOCUMENTS PERTAINING TO THE LANDSCAPE AND IRRIGATION OF THE ENTIRE PROJECT SITE SHALL BE SUBMITTED TO THE BUILDING DEPARTMENT AND APPROVED BY PUBLIC FACILITIES DEVELOPMENT PRIOR TO ISSUANCE OF BUILDING PERMITS.
14. PRIOR TO FINAL CITY INSPECTION, THE LANDSCAPE ARCHITECT SHALL SUBMIT A CERTIFICATE OF COMPLETION TO PUBLIC FACILITIES.
15. NOT USED.
16. ALL LANDSCAPE AND IRRIGATION DESIGNS SHALL MEET CURRENT CITY STANDARDS AS LISTED IN GUIDELINES OR AS OBTAINED FROM PUBLIC FACILITIES DEVELOPMENT.
17. NOT USED.
18. ALL VERTICAL MOUNTING POLES OF CHAIN LINK FENCING SHALL BE CAPPED.
19. LANDSCAPED AREAS SHALL BE DELINEATED WITH A MINIMUM SIX INCHES (6") HIGH CURB
20. THE ENTIRE PROJECT SHALL BE PERMANENTLY MAINTAINED WITH AN AUTOMATIC IRRIGATION SYSTEM.

**SITE LEGEND**

|  |  |  |  |
|--|--|--|--|
|  | LANDSCAPED AREA  |  | STANDARD PARKING STALL<br>9'-0" X 19'                          |
|  | CONCRETE PAVING - SEE "C" DRWGS. FOR THICKNESS                         |  | ACCESSIBLE PARKING STALL.<br>9' X 19' + 5' W/ ACCESSIBLE AISLE |
|  | PATH OF TRAVEL   |  | CLEANAIR VANPOOL/EV STALL (10%)                                |
|  | 26' FIRE LANE. PROVIDE RED CURBS AND SIGNAGE PER FIRE DEPT REQUIREMENT |  | PRIVATE FIRE HYDRANT APPROXIMATE LOCATION                      |