

# 3600

PROGRESS DRIVE  
BENSALEM, PA



FOR LEASE | 21,706 SF | OFFICE SPACE

The  
Flynn  
Company

THE FLYNN COMPANY  
WWW.FLYNNCO.COM  
1621 WOOD STREET, PHILADELPHIA, PA 19103  
215.561.6565

MICHAEL BORSKI, SR.  
215-561-6565 x 120  
mborski@flynnco.com

PAT GILMORE  
215-561-6565 x 122  
pgilmore@flynnco.com

# 3600

PROGRESS DRIVE

# AVAILABLE FOR LEASE

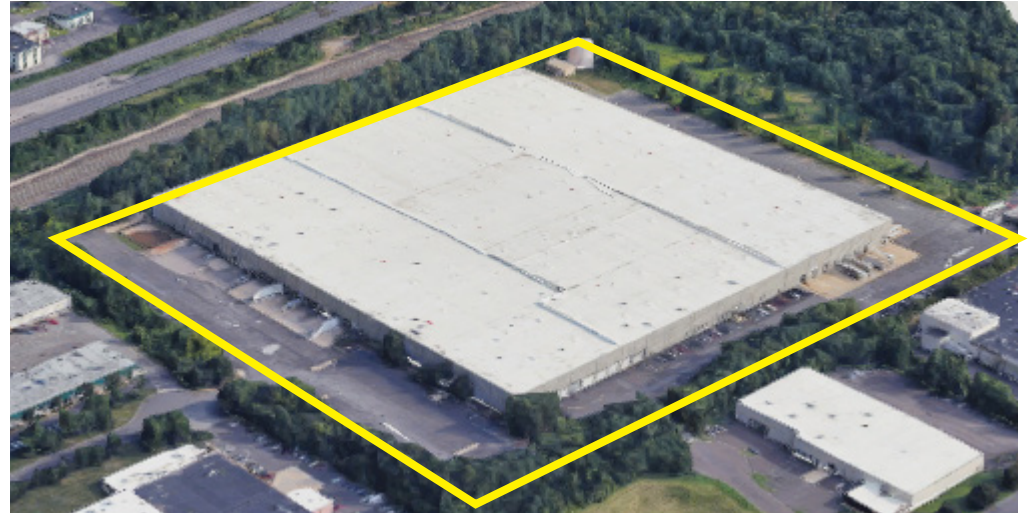
21,706 SF | OFFICE SPACE

## PROPERTY DETAILS

- 21,706 SF TWO-STORY OFFICE SPACE AVAILABLE
- 562,560+/- SF WAREHOUSE DISTRIBUTION FACILITY
- PRIMARILY OPEN FLOOR PLAN
- 100% WET SPRINKLER SYSTEM
- AMPLE CAR PARKING
- ELEVATOR SERVED

## LOCATION

- PROPERTY IS IDEALLY LOCATED IN THE EXPRESSWAY 95 INDUSTRIAL CENTER
- THE STREET ROAD EXIT OFF I-95 IS LOCATED AT THE ENTRANCE TO THE EXPRESSWAY 95 INDUSTRIAL CENTER, PROVIDING NORTH/SOUTH ACCESS
- WITHIN MINUTES OF ROUTE 1 AND THE PA TURNPIKE



# 3600

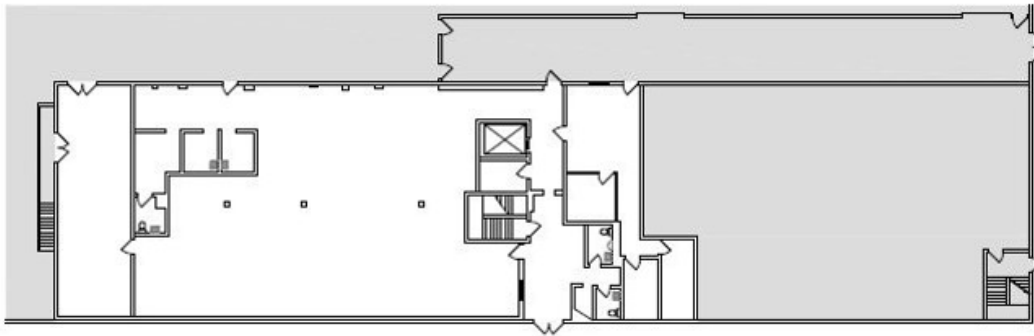
PROGRESS DRIVE

# AVAILABLE FOR LEASE

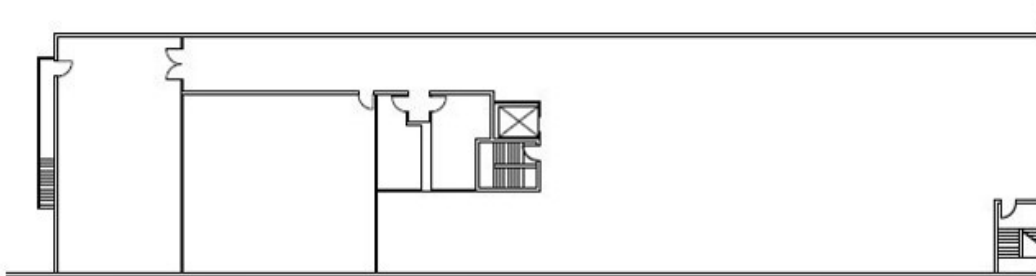
21,706 SF | OFFICE SPACE

## FLOOR PLANS & PHOTOS

FIRST FLOOR



SECONDFLOOR



# 3600

PROGRESS DRIVE

# AVAILABLE FOR LEASE

21,706 SF | OFFICE SPACE

## LOCATION

- 1370 IMPERIAL WAY IS LOCATED WITHIN THE MIDATLANTIC CORPORATE CENTER.
- MIDATLANTIC CORPORATE CENTER IS LOCATED AT EXIT 20 ON I-295.
- MIDATLANTIC CORPORATE CENTER IS CENTRALLY LOCATED BETWEEN NEW YORK CITY, BOSTON, WASHINGTON, DC AND PHILADELPHIA.
- LOCATED WITHIN MINUTES FROM EXIT 2 AND EXIT 3 OF THE NEW JERSEY TURNPIKE.
- THIS LOCATION HAS EASY ACCESS TO THE COMMODORE BARRY, DELAWARE MEMORIAL, WALT WHITMAN, AND BEN FRANKLIN BRIDGES AND ALL PORTS LOCATED IN SOUTHERN NEW JERSEY AND PHILADELPHIA.

