

BRIDGE POINT **i5**

701 & 751 NE COLUMBIA BLVD
PORTLAND, OR



CONVENIENT. SMART. INDUSTRIAL.

INTRODUCING PORTLAND'S NEXT
MAJOR INDUSTRIAL DEVELOPMENT, JUST MINUTES
FROM INTERSTATE 5 AND PORTLAND'S CBD.
BECOME A TENANT NOW.

bridgepointi5.com





30'
CLEAR HEIGHT



77,527
AVAILABLE SF



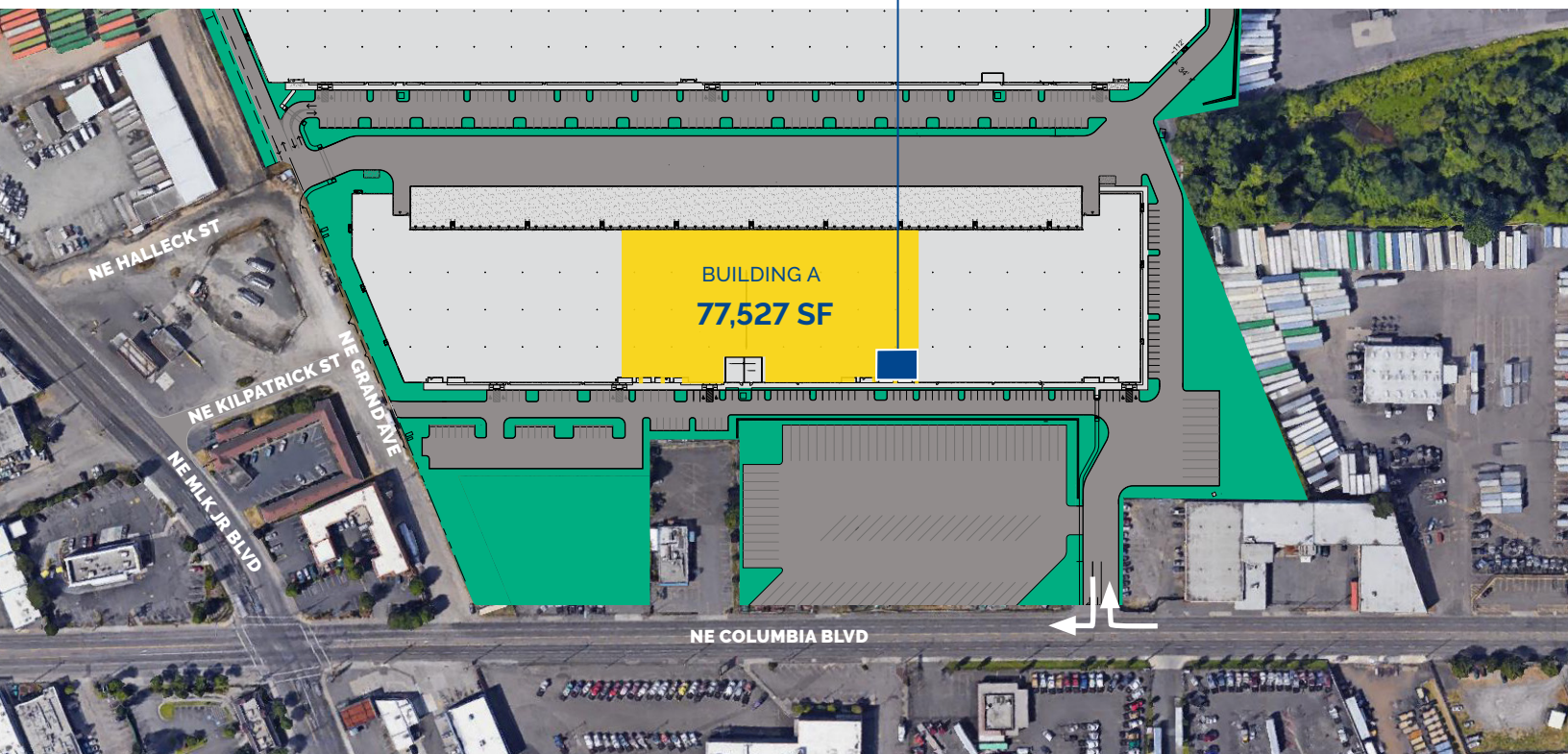
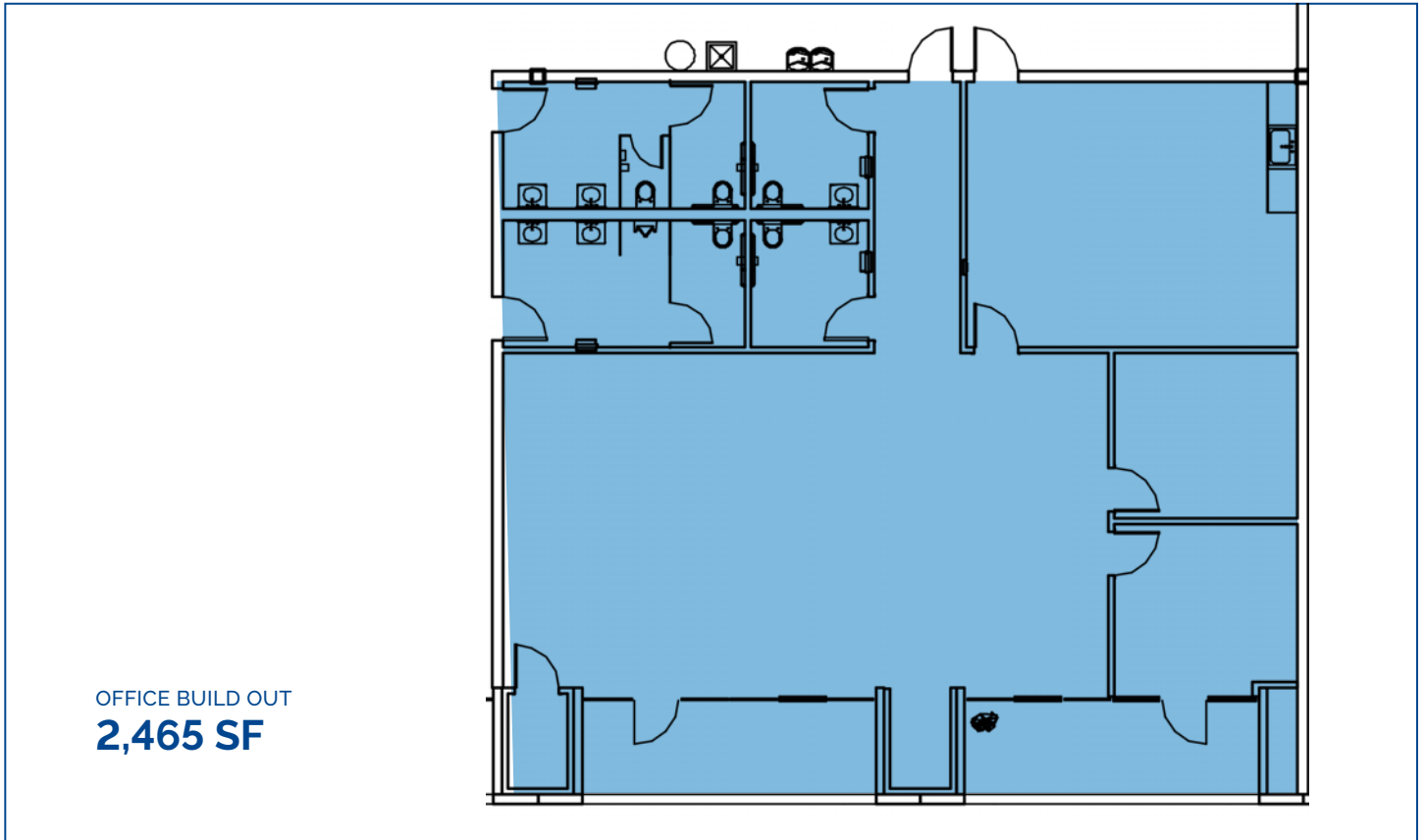
31
AUTO PARKING



25
DOCK SPACES



8
TRAILER PARKING









BRIDGE POINT i5

Location Amenities



RESTAURANTS

SUPPORT SERVICES

ENTERPRISE ZONE

The Oregon E-Zone program is a state of Oregon economic development program that allows for property tax exemptions for up to five years.

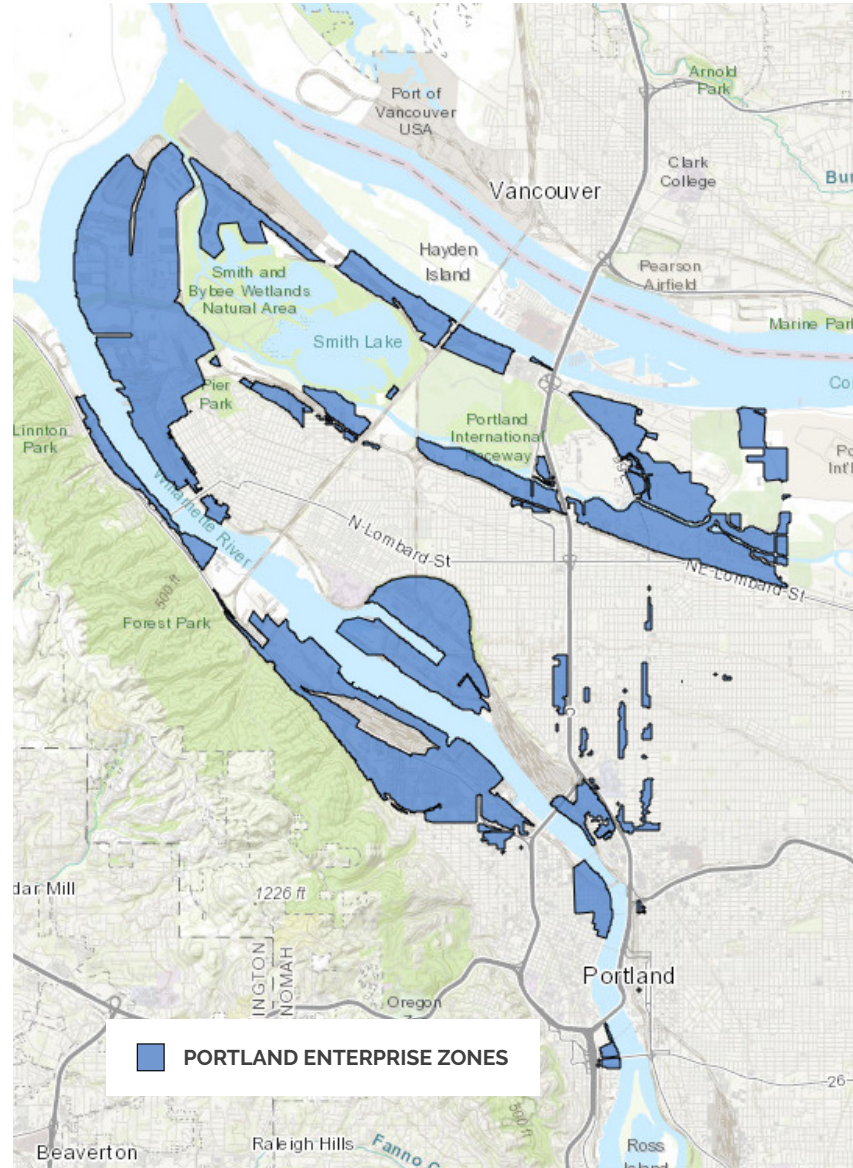
The E-Zone program allows industrial firms that will be making a substantial new capital investment a waiver of 100% of the amount of real property taxes attributable to the new investment for a 5-year period after completion. For additional info, visit: prosperportland.us

PORTLAND AT A GLANCE

#3 FORBES BEST CITY FOR BUSINESS IN U.S.

#6 50 BEST PLACES TO LIVE IN AMERICA

#9 FASTEST GROWING STATE IN THE U.S.

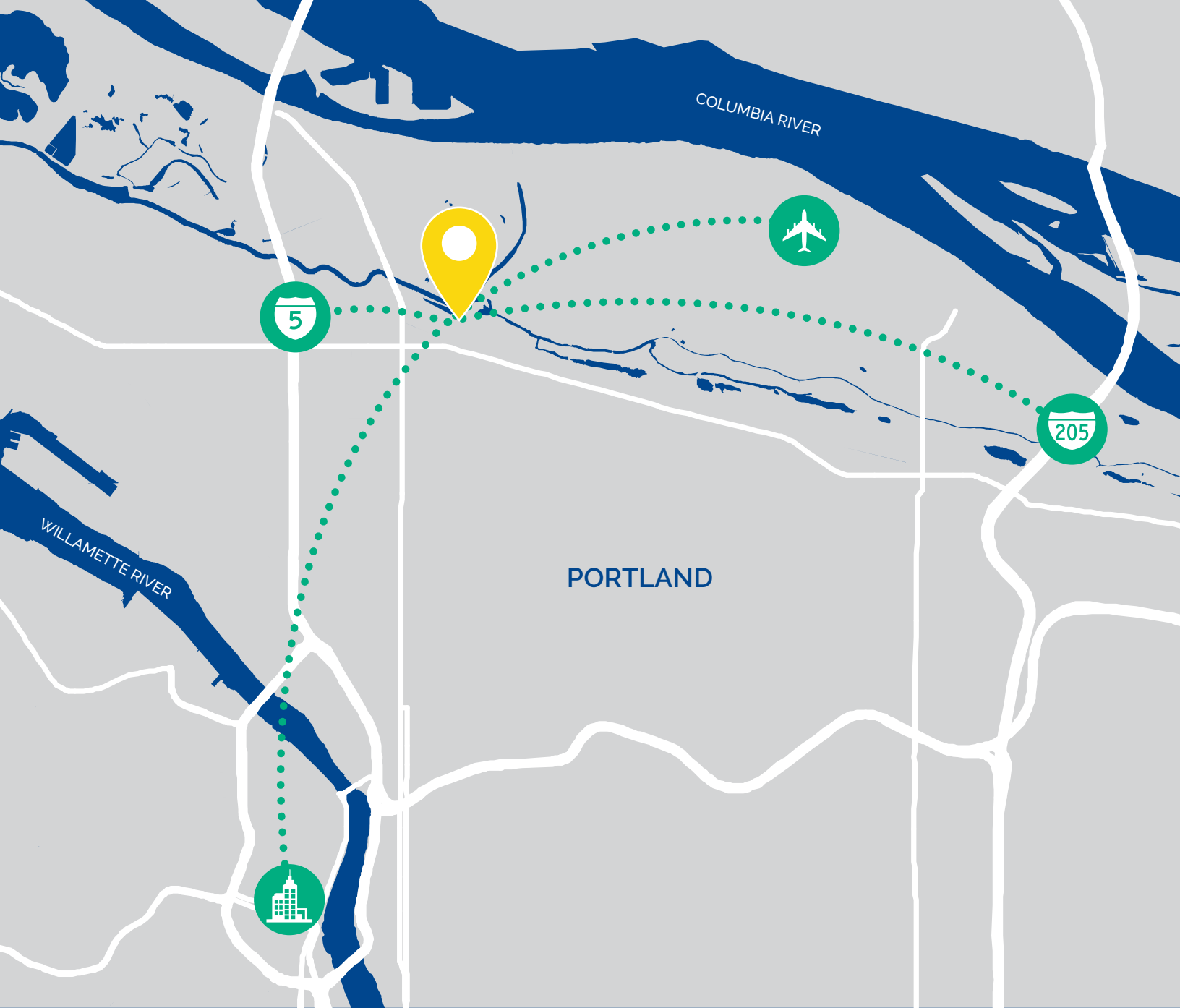


OREGON FORECAST EMPLOYMENT GROWTH

17%
CONSTRUCTION

7%
MANUFACTURING

11%
TRADE, UTILITIES &
TRANSPORTATION



Conveniently located just 5 miles from Downtown Portland, Bridge Point I-5 offers excellent exposure with direct access to Interstate 5. Bridge Point I-5 boasts modern industrial functionality, in a unique close-in location, making it the most exciting development in the Portland metropolitan area.

1 mile
to
I-5

5 miles
to
CBD

5 miles
to
I-205

3 miles
to
PDX

BRIDGE POINT i5

701 & 751 NE COLUMBIA BLVD
PORTLAND, OR



FOR LEASING INFORMATION, CONTACT

Tom Talbot, SIOR

503.221.2270

tom.talbot@kidder.com

Zach Francis

503.221.2290

zach.francis@kidder.com

Karla Hansen

503.721.2727

karla.hansen@kidder.com



**Kidder
Mathews**

KIDDER.COM

DEVELOPED BY



BRIDGEPOINTi5.COM

OWNED BY



GLP.COM

Nick Niemann

310.427.4311

nniemann@glp.com

Tom Cherry

310.480.9608

tcherry@glp.com

This information supplied herein is from sources we deem reliable. It is provided without any representation, warranty or guarantee, expressed or implied as to its accuracy. Prospective Buyer or Tenant should conduct an independent investigation and verification of all matters deemed to be material, including, but not limited to, statements of income and expenses. Consult your attorney, accountant, or other professional advisor.

BRIDGEPOINTI5.COM