

FOR LEASE

330 Wyckoff Mills Road

East Windsor, NJ



±160,462 SF on 23.7 Acres

WAREHOUSE FACILITY

- **New Construction**
- **Available Q3 2023**

©2023 Cushman & Wakefield. All rights reserved. The material in this presentation has been prepared solely for information purposes, and is strictly confidential. Any disclosure, use, copying or circulation of this presentation (or the information contained within it) is strictly prohibited, unless you have obtained Cushman & Wakefield's prior written consent. The views expressed in this presentation are the views of the author and do not necessarily reflect the views of Cushman & Wakefield. Neither this presentation nor any part of it shall form the basis of, or be relied upon in connection with any offer, or act as an inducement to enter into any contract or commitment whatsoever. NO REPRESENTATION OR WARRANTY IS GIVEN, EXPRESS OR IMPLIED, AS TO THE ACCURACY OF THE INFORMATION CONTAINED WITHIN THIS PRESENTATION, AND CUSHMAN & WAKEFIELD IS UNDER NO OBLIGATION TO SUBSEQUENTLY CORRECT IT IN THE EVENT OF ERRORS.

PROPERTY FEATURES



BUILDING DETAILS

± 160,462 SF

TOTAL BUILDING SIZE

± 23.7 ACRES

TOTAL SITE

36'

CEILING HEIGHT

1,200 AMPS

POWER

40FC @ 36" AFF

LIGHTING

54' X 50'

COLUMN SPACING

ESFR

SPRINKLER SYSTEM

12' X 14' MOTORIZED

DRIVE-IN DOORS

AVAILABILITY DETAILS

± 160,462 SF

TOTAL SPACE
AVAILABLE

± 2,300 SF

OFFICE
SPACE

**21 Exterior
Doors**

DOCK DOORS

Two

DRIVE-IN
DOORS

Up to 162

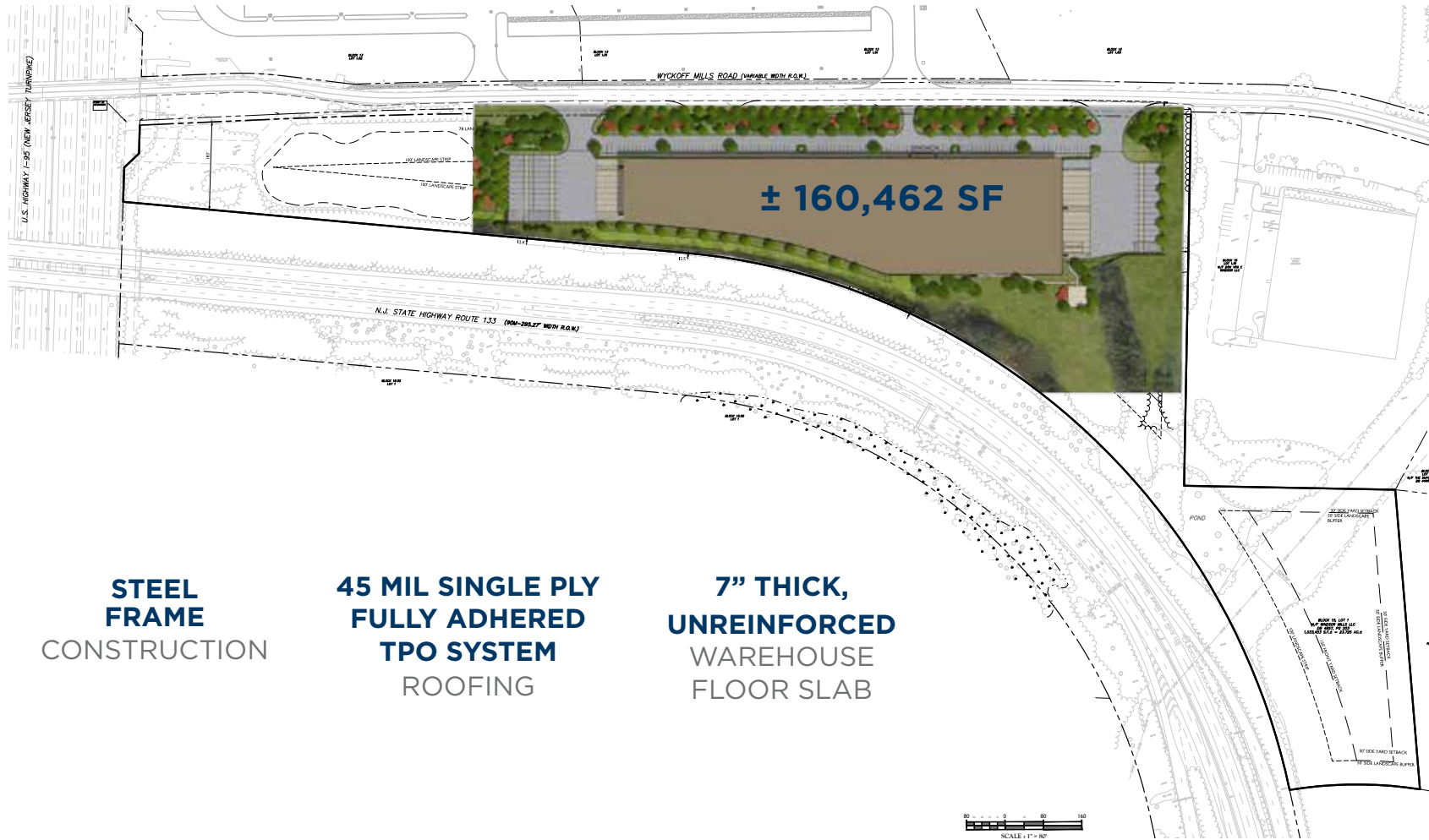
CAR PARKING
SPACES

EXPANDABLE TO 177

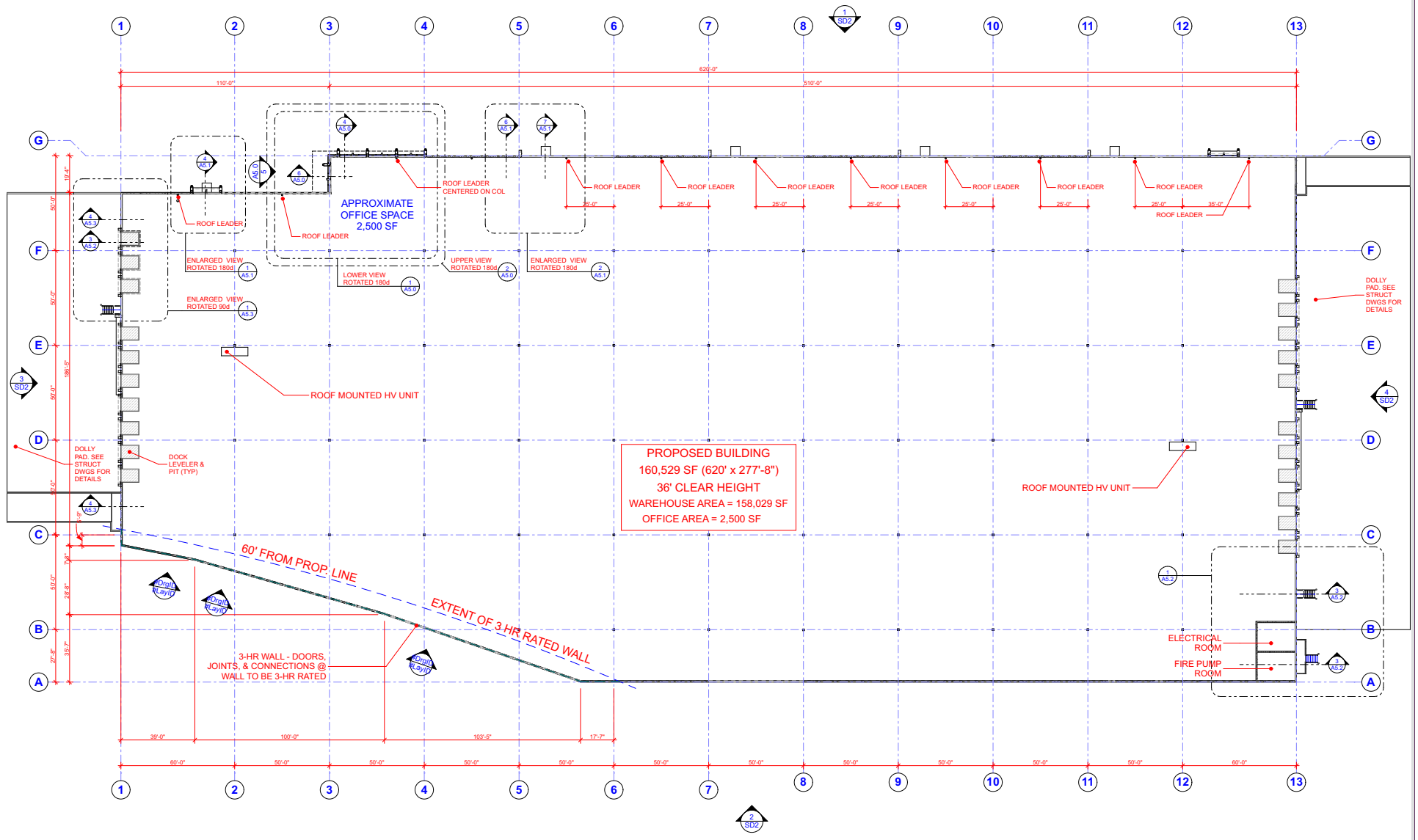
27

TRAILER
PARKING STALLS

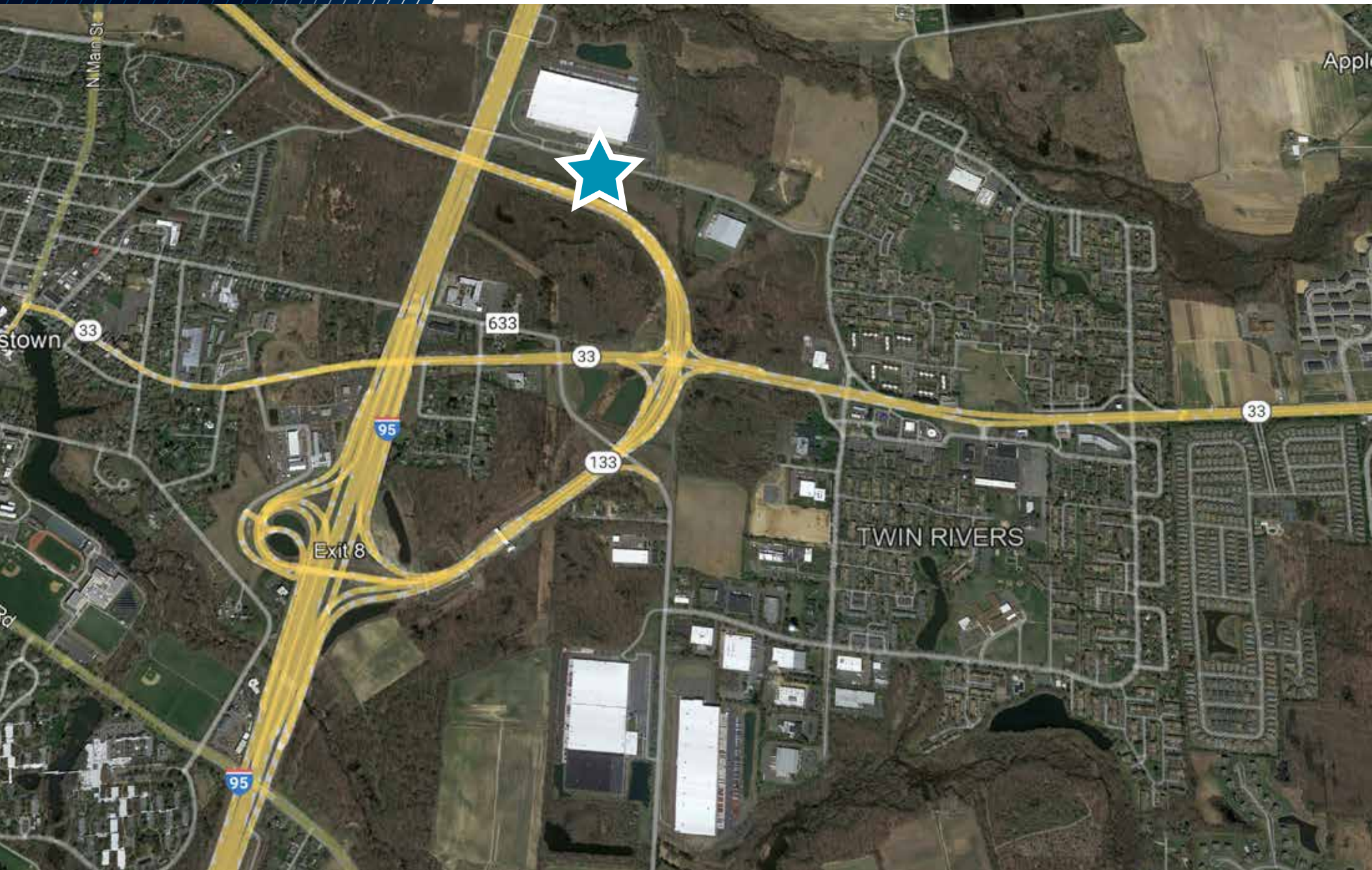
PROPERTY SITE PLAN

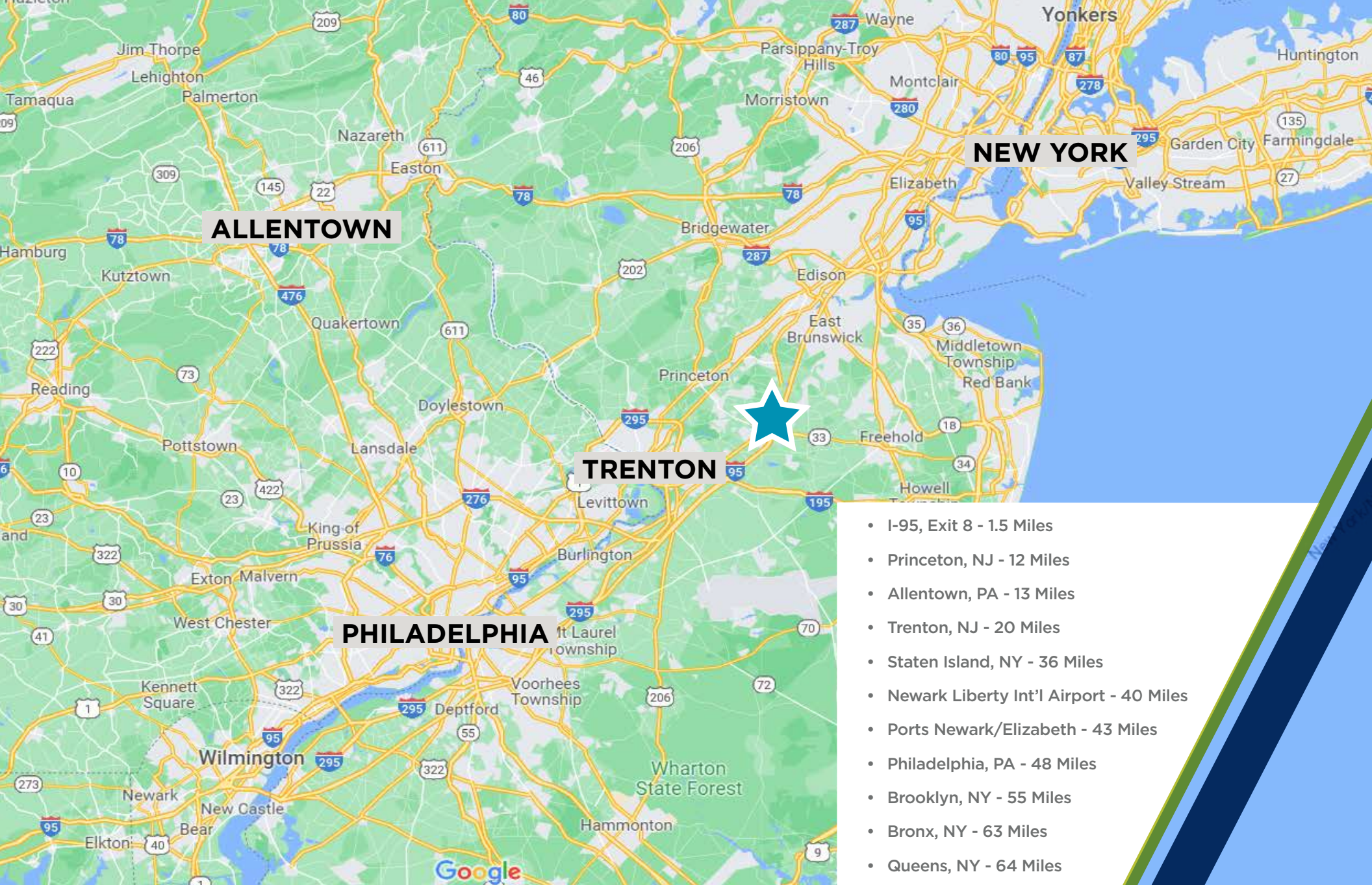


PROPERTY FLOOR PLAN



PROPERTY AERIAL VIEW





Charles Fern
 +1 732 243 3101
 chuck.fern@cushwake.com

Jason Barton
 +1 732 2423 3104
 jason.barton@cushwake.com

Jack Winge
 +1 732 2423 3114
 jack.winge@cushwake.com



cushmanwakefield.com